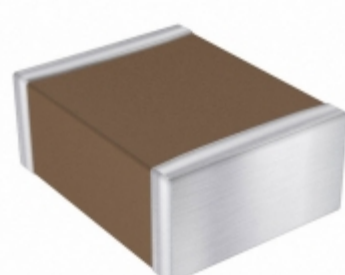


LD101A472JAB2A



Part Number: [LD101A472JAB2A](#)
Manufacturer: [AVX Corporation](#)
Description: CAP CER 4700PF 100V NP0 1210
Data sheet: [Ceramic Chip Capacitor Catalog](#)
[LD Series, MLCC Tin/Lead Term B](#)

RoHS Status: Contains lead / RoHS non-compliant
Ship From: Hong Kong
Shipment Way: DHL/Fedex/TNT/UPS/EMS

Images are for reference only.
 See Product Specifications for product details.
 Buy LD101A472JAB2A with confidence from
 Component-World.HK, 1 Year Warranty

[Request For Quotation](#)

PRODUCT PARAMETER

Part Number	LD101A472JAB2A	Manufacturer	AVX Corporation
Description	CAP CER 4700PF 100V NP0 1210	Lead Free Status / RoHS Status	Contains lead / RoHS non-compliant
Quantity Available	243121 pcs	Data sheet	Ceramic Chip Capacitor Catalog LD Series, MLCC Tin/Lead Term B
Category	Capacitors	Voltage - Rated	100V
Tolerance	±5%	Thickness (Max)	0.050" (1.27mm)
Temperature Coefficient	C0G, NP0	Size / Dimension	0.126" L x 0.098" W (3.20mm x 2.50mm)
Series	LD	Ratings	-
Packaging	Tape & Reel (TR)	Package / Case	1210 (3225 Metric)
Operating Temperature	-55°C ~ 125°C	Mounting Type	Surface Mount, MLCC
Moisture Sensitivity Level (MSL)	1 (Unlimited)	Manufacturer Standard Lead Time	16 Weeks
Lead Style	-	Lead Spacing	-
Lead Free Status / RoHS Status	Contains lead / RoHS non-compliant	Height - Seated (Max)	-
Features	-	Detailed Description	4700pF ±5% 100V Ceramic Capacitor C0G, NP0 1210 (3225 Metric)
Capacitance	4700pF	Applications	General Purpose

Component-World.com is a Reliable Stocking Distributor of Electronic Components. We specialize in all AVX Corporation series electronic components. We have 243121 pieces of AVX Corporation LD101A472JAB2A in stock available now. Request a quote from electronics components distributor at Component-World.com, our sales team will contact you within 24 hours.
 RFQ Email: info@Components-World.com

RELATED PRODUCTS

	Part#: LD1-680-R Description: FIXED IND 68UH 460MA 1.12 OHM	Manufacturers: Bussmann (Eaton)	RFQ
	Part#: LD1-5R6-R Description: FIXED IND 5.6UH 1.51A 101 MOHM	Manufacturers: Bussmann (Eaton)	RFQ
	Part#: LD101C274KAB2A Description: CAP CER 0.27UF 100V X7R 1210	Manufacturers: AVX Corporation	RFQ
	Part#: LD101C473KAB2A Description: CAP CER 0.047UF 100V X7R 1210	Manufacturers: AVX Corporation	RFQ
	Part#: LD101A102JAB2A Description: CAP CER 1000PF 100V C0G/NP0 1210	Manufacturers: AVX Corporation	RFQ
	Part#: LD101A102JAB4A Description: CAP CER 1000PF 100V C0G/NP0 1210	Manufacturers: AVX Corporation	RFQ
	Part#: LD101C104KAB2A Description: CAP CER 0.1UF 100V X7R 1210	Manufacturers: AVX Corporation	RFQ
	Part#: LD101A122JAB2A Description: CAP CER 1200PF 100V NP0 1210	Manufacturers: AVX Corporation	RFQ
	Part#: LD101A472FAB2A Description: CAP CER 4700PF 100V NP0 1210	Manufacturers: AVX Corporation	RFQ
	Part#: LD101A152FAB2A Description: CAP CER 1500PF 100V NP0 1210	Manufacturers: AVX Corporation	RFQ
	Part#: LD1-820-R Description: FIXED IND 82UH 430MA 1.28 OHM	Manufacturers: Bussmann (Eaton)	RFQ
	Part#: LD101C104KAB4A Description: CAP CER 0.1UF 100V X7R 1210	Manufacturers: AVX Corporation	RFQ
	Part#: LD101A472KAB2A Description: CAP CER 4700PF 100V NP0 1210	Manufacturers: AVX Corporation	RFQ
	Part#: LD1-8R2-R Description: FIXED IND 8.2UH 1.32A 132 MOHM	Manufacturers: Bussmann (Eaton)	RFQ
	Part#: LD1-6R8-R Description: FIXED IND 6.8UH 1.41A 117 MOHM	Manufacturers: Bussmann (Eaton)	RFQ
	Part#: LD101C105KAB2A Description: CAP CER 1UF 100V X7R 1210	Manufacturers: AVX Corporation	RFQ
	Part#: LD101C225KAB2A Description: CAP CER 2.2UF 100V X7R 1210	Manufacturers: AVX Corporation	RFQ
	Part#: LD101C105MAB2A Description: CAP CER 1UF 100V X7R 1210	Manufacturers: AVX Corporation	RFQ
	Part#: LD101A821FAB2A Description: CAP CER 820PF 100V NP0 1210	Manufacturers: AVX Corporation	RFQ
	Part#: LD101C104JAB2A Description: CAP CER 0.1UF 100V X7R 1210	Manufacturers: AVX Corporation	RFQ

Related keywords for LD101A472JAB2A

AVX Corporation LD101A472JAB2A	LD101A472JAB2A distributor	LD101A472JAB2A supplier	LD101A472JAB2A price
LD101A472JAB2A download datasheet	LD101A472JAB2A datasheet	LD101A472JAB2A stock	buy LD101A472JAB2A
AVX Corporation LD101A472JAB2A	AVX Corporation [MIL] LD101A472JAB2A		